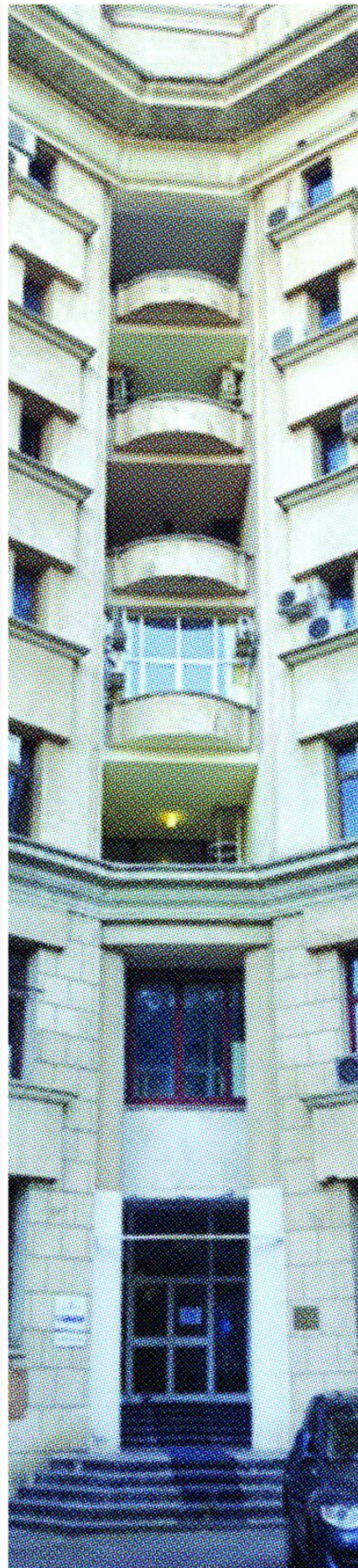


Situația impozitului pe profit plătit de sistemul bancar între 2011 și 2016

Situația anuală profit banci						
SOCIETATE BANCARA	CUI	AN	Pierdere de recuperat din anii precedenti	Profitul/ Pierdere an curent	Pierdere de recuperat în anul următor/ Profitul impozabil după acoperirea pierderii	Impozit pe profit anual
RAFFEISEN BANK S.A	361820	2011	0	418.640.954	418.640.954	58.911.578
		2012	0	466.852.402	466.852.402	66.190.201
		2013	0	542.567.326	542.567.326	58.101.994
		2014	0	598.463.237	598.463.237	87.768.514
		2015	0	568.602.060	568.602.060	83.767.187
		2016	0	545.937.121	545.937.121	74.552.673
					3.137.066.230	429.391.163
ING BANK N.V. AMSTERDAM SUCURSALA BUCURESTI S.A.	6151100	2011	0	187.738.185	187.738.185	29.744.443
		2012	0	245.246.400	245.246.400	38.579.237
		2013	0	258.217.467	258.217.467	40.743.008
		2014	0	309.114.817	309.114.817	57.584.751
		2015	0	367.144.434	367.144.434	56.282.928
		2016	0	583.198.648	583.198.648	84.273.013
					2.010.718.071	307.617.582
					3.785.753.118	94.205.472
					346.325.543	0
					753.770.965	0
					539.587.890	0
					137.275.003	19.571.201
					1.084.793.762	157.782.648
					1.222.068.766	269.559.321
					18.182.741	0
					33.449.179	5.351.696
					39.494.101	6.319.596
					32.263.108	5.274.027
					16.478.840	2.636.514
					3.972.076	587.070
					140.840.866	22.756.837
					160.832.867	25.733.259
					188.548.495	30.187.259
					271.463.026	43.438.811
					326.813.469	52.229.578
					249.089.307	39.814.285
					290.385.222	44.828.684
					1.478.962.365	235.214.442
					220.142.805	32.296.552
					268.709.580	44.050.187
					54.859.536	8.189.596
					145.972.684	19.252.725
					398.473.388	60.288.147
					602.784.717	184.086.887
					78.660.800	11.721.961
					24.382.416	0
					96.456.289	10.945.205
					38.441.821	5.345.387
					68.467.668	10.448.882
					10.055.418	2.368.327
					192.044.678	40.272.790
					4.817.327	770.772
					13.493.999	2.129.333
					9.311.834	1.432.549
					6.747.549	1.059.844
					9.310.413	1.504.980
					6.359.444	1.243.981
					52.440.586	8.241.354
					9.310.098	1.504.980
					11.191.928	1.705.551
					4.928.389	770.772
					6.581.737	1.059.844
					20.242.817	3.137.066
					37.956.051	5.313.208
					49.041.629	7.019.789
					652.368	93.178
					261.046	41.767
					404.583	54.733
					433.634	69.221

Page 1

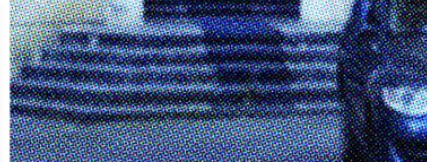


BANCA COMERCIALA CARPATICA SA	11447021	2011	-169.521.105	-25.965.785	-192.486.890	0
		2012	-192.486.890	-32.087.111	-224.574.001	0
		2013	-200.793.061	-3.191.385	-197.601.676	0
		2014	-197.801.676	-104.409.224	-302.210.900	0
		2015	-302.210.900	-268.599.273	-570.810.173	0
		2016	-296.499.273	-34.838.141	-248.553.176	0
					-248.553.176	0
BANCA DE INVESTITII SI DEZVOLTARE BID	12592666	2011	-293.007	-48.897	-341.904	0
		2012	-208.500	-72.873	-281.373	0
		2013	-193.413	-18.599	-182.012	0
		2014	-162.234	-8.843	-171.077	0
		2015	-180.212	-672	-180.884	0
		2016	-151.084	-617	-151.701	0
					-191.791	0
PROREDIT BANK SA	14622194	2011	-60.235.140	20.778.717	-39.456.423	0
		2012	-39.456.423	-24.422.881	-63.879.304	0
		2013	-63.879.304	5.098.932	-58.780.372	0
		2014	-54.779.378	1.811.987	-52.967.391	0
		2015	-41.888.987	10.677.962	-31.211.025	0
		2016	-31.211.025	7.518.617	-23.692.408	0
					-33.672.680	0
BANK OF CYPRUS PUBLIC COMPANY LIMITED NICOSIA - SUCURSALA ROMANIA	19189955	2011	-51.356.515	28.259.533	-23.096.982	0
		2012	-23.096.982	5.719.011	-17.377.971	0
		2013	-17.377.971	-825.216	-18.203.187	0
		2014	-70.303.287	-28.545.280	-98.848.567	0
		2015	-67.249.087	4.887.416	-62.361.671	0
		2016	-62.361.671	10.038.413	-52.323.258	0
					-92.781.871	0
BNP PARIBAS FORTIS - SUCURSALA BUCURESTI	21920495	2011	-11.138.169	807.270	-10.330.899	0
		2012	-10.330.899	4.884.217	-5.446.682	0
		2013	-7.818.844	2.889.490	-4.929.354	0
		2014	-2.358.018	-512.319	-2.870.337	0
		2015	-2.866.337	-320.763	-3.187.100	0
		2016	-6.187.907	-1.463.559	-7.651.466	0
					-14.338.859	0
BANK LELIM ROMANIA SA	199015	2011	-34.876.446	-31.746.477	-66.622.922	0
		2012	-66.622.922	-32.911.061	-99.533.983	0
		2013	-98.233.015	-5.884.150	-104.117.165	0
		2014	-104.117.165	1.654.700	-102.462.465	0
		2015	-102.462.465	-17.112.078	-119.574.543	0
		2016	-115.575.171	18.207.888	-97.367.283	0
					-336.819.377	0
BANCA REMANESTEA CREDITULI ROMANEA CREDIT BANK SA	361528	2011	-336.206.624	-109.863	-336.316.487	0
		2012	-336.316.487	523.700	-336.840.187	0
		2013	-336.840.187	444.778	-336.395.409	0
		2014	-336.395.409	-9.397.789	-345.793.198	0
		2015	-335.700.571	1.425.562	-334.275.009	0
		2016	-334.275.009	-46.251	-334.321.260	0
					-334.321.260	0
BANCA COMERCIALA ROMANIA SA	36157	2011	0	232.278.422	232.278.422	0
		2012	-232.278.422	1.488.126.490	-1.720.404.912	0
		2013	-1.720.404.912	11.917.605	-1.837.678.518	0
		2014	-1.837.678.518	1.186.411.599	-3.024.066.919	0
		2015	-3.024.066.919	1.519.823.832	-1.504.243.087	0
		2016	-1.504.243.087	1.462.080.179	-242.152.908	0
					-1.804.236.861	0
BANKOOP - BANCA	361765	2011	-4.727.847	-546.774	-5.274.621	0

Page 3

Situația anuală profit banci						
SOCIETATE BANCARA	CUI	AN	Pierdere de recuperat din anii precedenti	Profitul/ Pierdere an curent	Pierdere de recuperat în anul următor/ Profitul impozabil după acoperirea pierderii	Impozit pe profit anual
BLOM BANK FRANCE SA PARIS-SUCURSALA ROMANIA	22385331	2011	0	13.493.999	13.493.999	2.129.333
		2012	0	9.311.834	9.311.834	1.432.549
		2013	0	6.747.549	6.747.549	1.059.844
		2014	0	9.310.413	9.310.413	1.504.980
		2015	0	6.359.444	6.359.444	1.243.981
		2016	0	52.440.586	52.440.586	8.241.354
LIBRA INTERNET BANK SA	6119644	2011	-33.440.338	9.310.098	-24.130.240	0
		2012	-20.898.781	11.191.928	-9.706.853	0
		2013	-20.167.464	4.928.389	-15.239.075	0
		2014	-15.239.075	6.581.737	-8.657.338	0
		2015	-8.157.338	20.242.817	11.085.478	1.705.551
		2016	0	37.956.051	37.956.051	5.313.208
					49.041.629	7.019.789
					652.368	93.178
					261.046	41.767
					404.583	54.733
					433.634	69.221

Page 1



Situația anuală profit banci						
SOCIETATE BANCARA	CUI	AN	Pierdere de recuperat din anii precedenti	Profitul/ Pierdere an curent	Pierdere de recuperat în anul următor/ Profitul impozabil după acoperirea pierderii	Impozit pe profit anual
GENERALA DE CREDIT SI PROMOVARE S.A.		2012	-4.787.015	-655.822	-5.442.837	0
		2013	-5.442.837	589.028	-4.853.809	0
		2014	-4.769.909	-45.051	-4.814.960	0
		2015	-4.807.960	-47.493	-4.855.453	0
		2016	-4.855.453	-84.555	-4.940.008	0
					-4.910.108	0
BANCA COMERCIALA FEROVARA SA	25283452	2011	-14.139.792	-16.387.493	-30.527.285	0
		2012	-30.527.285	-20.047.200	-50.584.485	0
		2013	-50.584.485	-9.397.789	-60.982.274	0
		2014	-59.882.194	-48.094	-60.482.288	0
		2015	-60.482.288	2.483.743	-57.998.545	0
		2016	-57.998.545	-1.008.121	-58.986.667	0
					-58.986.667	0
GARANTI BANK SA	25349008	2011	-163.671.669	-20.700.471	-184.372.140	0
		2012	-184.372.140	1.986.861		